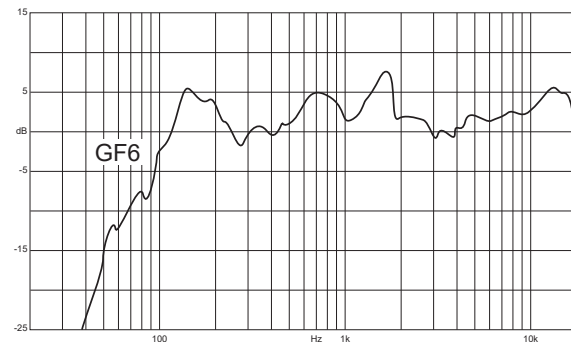


## GF6 / GF6W

### 6" Passive Speaker for Lo-Z and 70 V / 100 V distributed lines



The GF6 is a full-range, passive two-way loudspeaker designed to be installed on a shelf or with its own bracket directly on the wall. The GF6 features 8 Ω impedance and Hi-Z taps suiting any kind of wiring configuration, such as 70 V and 100 V distributed loudspeakers lines. The resilient ABS cabinet suits outdoor/indoor applications in permanent installations for music and speech in conference rooms, hotels, bars, restaurants and retail shops



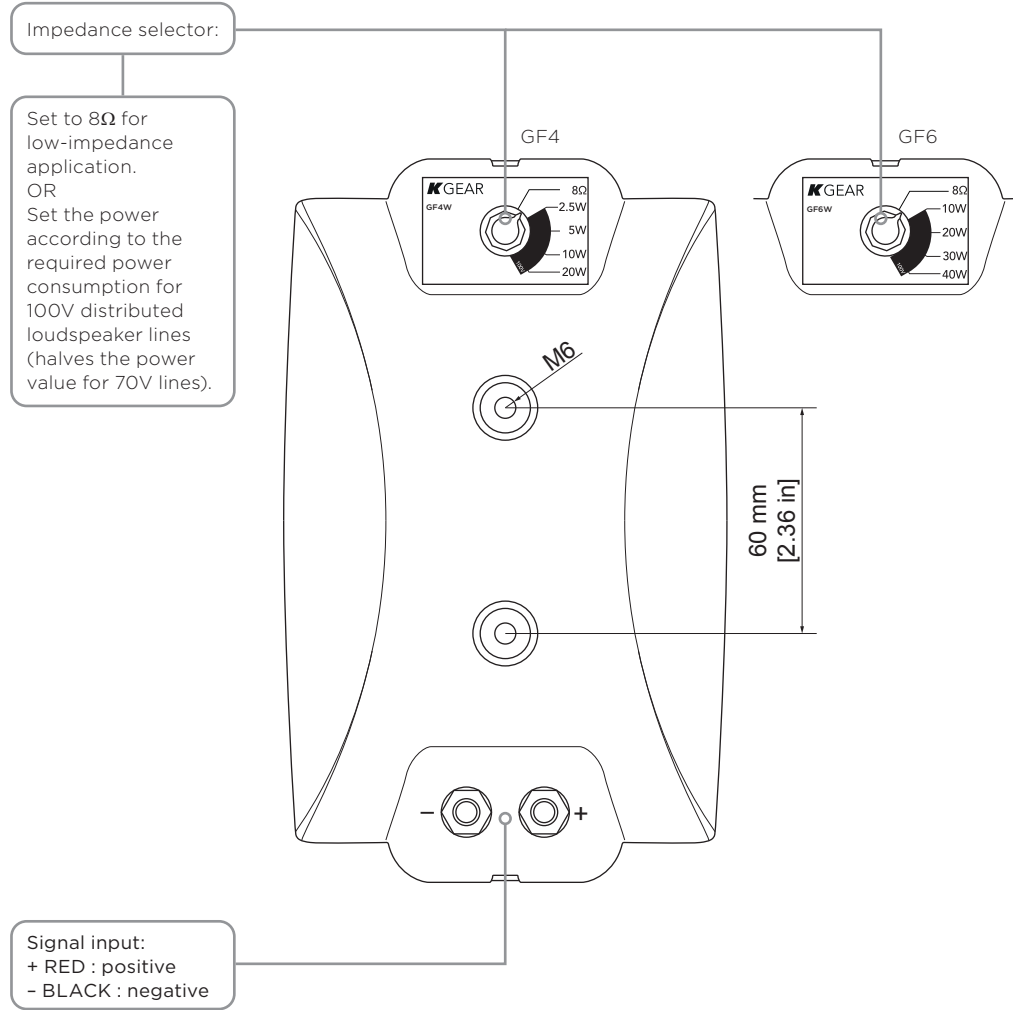
Frequent Applications	
Retail	Cafes, Bistros & Restaurants
Hotels & Resorts	Fitness & Wellness
Museum	Transportation Facilities

Suggested amplifiers	
GA201	up to 4 pcs/ch @ 8Ω
GA43 / GA43L	8Ω / 70V lines
GA46 / GA46L	8Ω / 70V / 100V lines

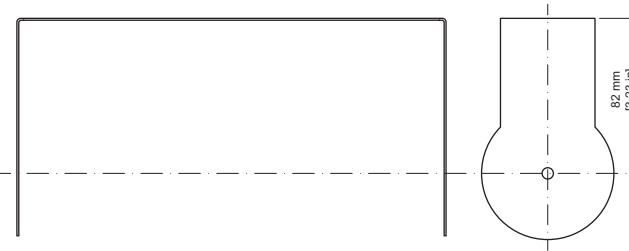
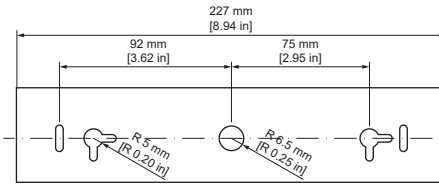
General				
Type	Passive loudspeaker			
Transducers	6" ferrite magnet woofer 1" tweeter			
Frequency Response	90 Hz - 20 kHz (-10 dB)			
Max SPL <sup>1</sup>	114 dB (peak)			
Power Handling	40 W	8 Ω	70 V	100 V
			5 W	10 W
			10 W	20 W
			15 W	30 W
		20 W	40 W	
Nominal Impedance	selectable: 8 Ω / Hi-Z @ 70V, 100V			
Coverage	V. 90°   H. 90°			
Dimensions (WxHxD)	220x320x220 mm (8.66x12.6x8.66 in)			
Weight	3 kg (6.6 lb)			
Material	ABS			
IP rating	IP54			
Color	Black (GF6) White (GF6W)			

<sup>1</sup> Maximum SPL is calculated using a signal with crest factor 4 (12dB) measured at 1 m.

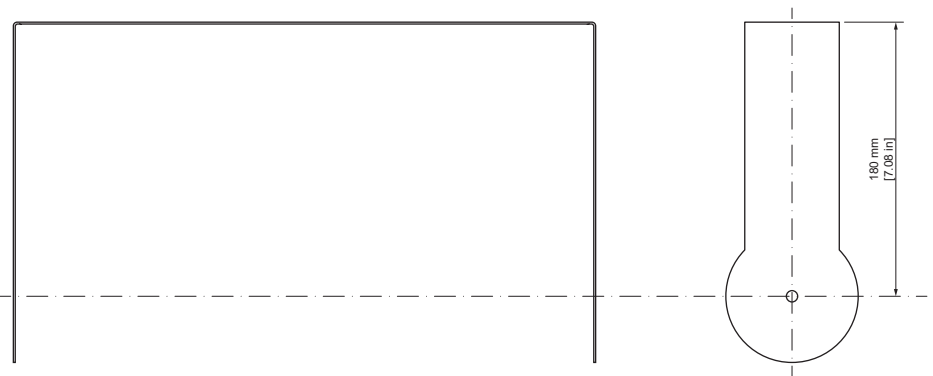
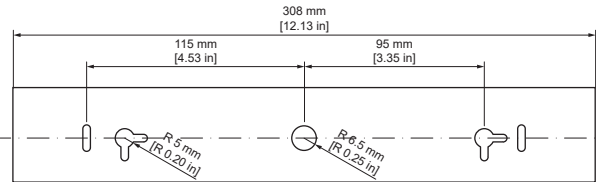
# Rear panel



GF4 / GF4W bracket



GF6 / GF6W bracket



# Brackets